

A PLAT OF PHEASANT RUN

BEING PLAT NO. 8 OF MARTIN DOWNS, A P.U.D.
LYING IN SECTION 14, TWP. 38 S., RGE. 40 E.
MARTIN COUNTY, FLORIDA

OCTOBER, 1983

I, Louise V. Isaacs,
Clerk of the Circuit
Court of Martin County,
Florida, hereby certify
that this Plat was filed
for record in Plat Book
9, Page 58, Martin
County, Florida, Public
Records, this day
of _____, 1984.

Louise V. Isaacs, Clerk
Circuit Court
Martin County, Florida

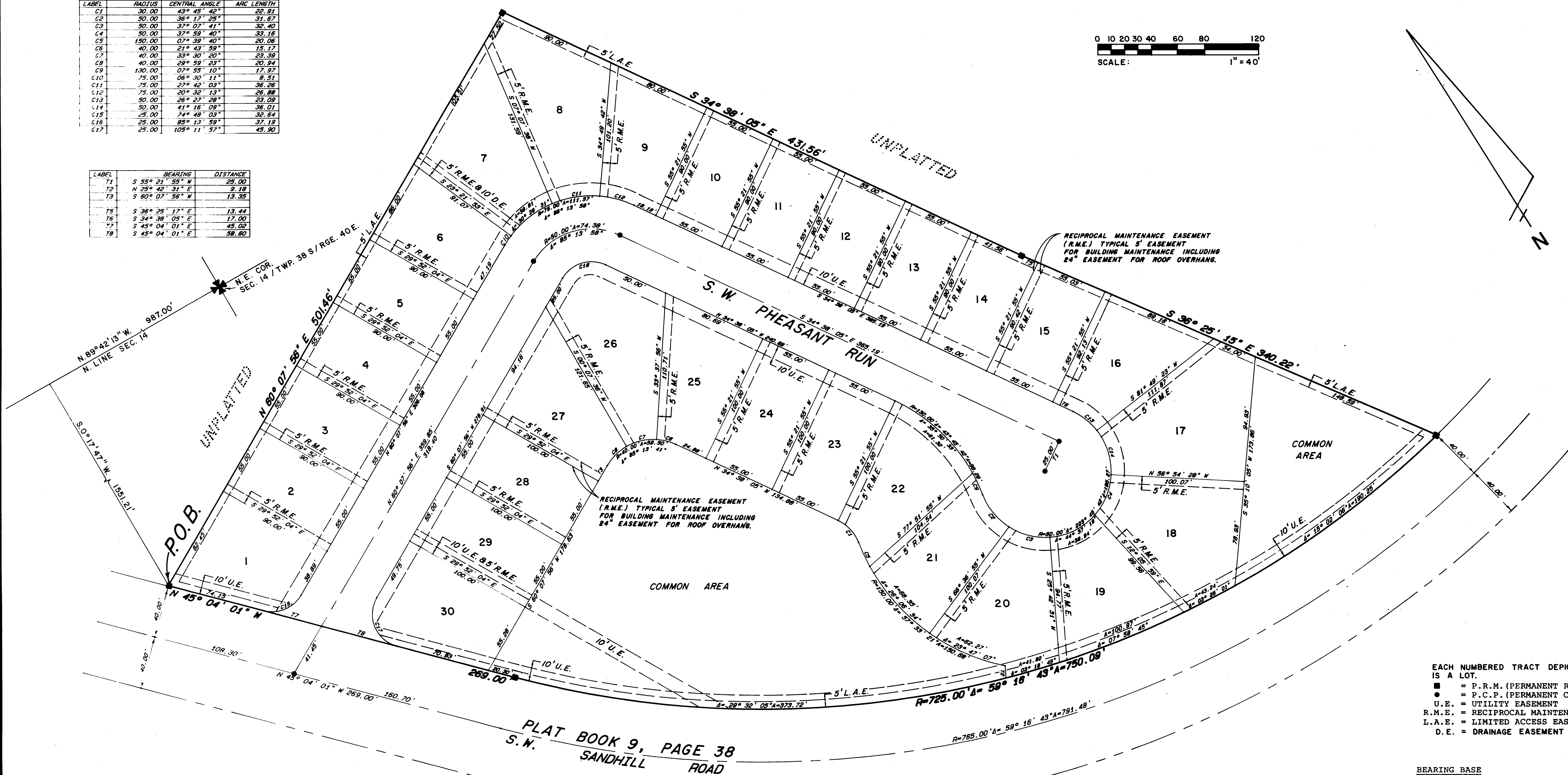
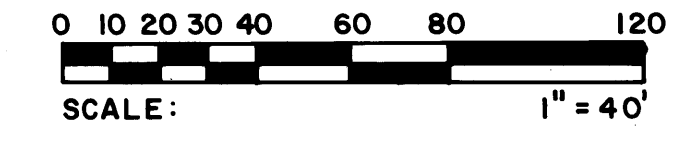
By: _____
Deputy Clerk

File No. _____

(Circuit Court Seal)

LABEL	RADIUS	CENTRAL ANGLE	ARC LENGTH
C1	30.00	43° 45' 42"	22.91
C2	30.00	36° 17' 28"	31.67
C3	30.00	37° 02' 41"	32.40
C4	30.00	37° 59' 40"	33.16
C5	150.00	07° 39' 40"	20.08
C6	40.00	21° 43' 59"	15.17
C7	40.00	33° 30' 20"	23.39
C8	40.00	28° 59' 23"	20.94
C9	130.00	07° 59' 10"	17.97
C10	75.00	06° 30' 11"	8.51
C11	75.00	27° 42' 03"	36.26
C12	75.00	20° 32' 13"	26.88
C13	30.00	26° 27' 28"	23.09
C14	30.00	41° 16' 09"	36.01
C15	25.00	74° 48' 03"	32.64
C16	25.00	85° 13' 59"	37.19
C17	25.00	105° 11' 57"	43.30

LABEL	BEARING	DISTANCE
T1	S 55° 21' 59" W	25.00
T2	N 25° 42' 31" E	9.18
T3	S 60° 07' 56" N	13.35
T4	S 36° 29' 17" E	13.44
T5	S 34° 38' 09" E	17.00
T6	S 45° 04' 01" E	45.02
T7	S 45° 04' 01" E	58.80



EACH NUMBERED TRACT DEPICTED HEREON IS A LOT.

- = P.R.M. (PERMANENT REFERENCE MONUMENT)
- = P.C.P. (PERMANENT CONTROL POINT)
- U.E. = UTILITY EASEMENT
- R.M.E. = RECIPROCAL MAINTENANCE EASEMENT
- L.A.E. = LIMITED ACCESS EASEMENT
- D.E. = DRAINAGE EASEMENT

BEARING BASE
THE NORTH LINE OF SECTION 14, TOWNSHIP 38 SOUTH, RANGE 40 EAST, IS TAKEN TO BE N 89°42'13" W, AND ALL OTHER BEARINGS ARE RELATIVE THERETO.

PLAT BOOK 9, PAGE 38
S.W. SANDHILL ROAD

LINDAHL, BROWNING, FERRARI & HELLSTROM, INC. Consulting Engineers, Planners & Surveyors	2	2
JUPITER, FLORIDA STUART, FLORIDA		
FORT PIERCE, FLORIDA		